



# Jain Center Of Southern California

## Expansion Charity Gala May 2003





# BUILD YOUR DREAM HOME

ON 1/2 ACRE VIEWLOT OR MOVE IN TO

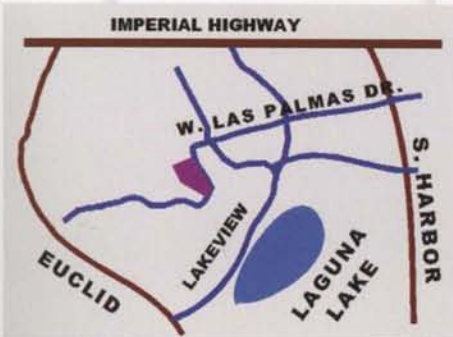
## 6 BED ROOM 5 BATH CUSTOM HOME

IN

PRESTIGIOUS SUNNYHILLS IN FULLERTON



TWILIGHTS VIEW



ARTIST RENDERING  
831 W. LAS PALMAS DR.



SUNRISE VIEW

OFFERED BY

SONIA (714) 470-8734

RANCHO LAS PALMAS

AT SUNNY HILLS

CUSTOM HOME COLLECTION FROM GREENBROOK @ CERRITOS, LLC

Welcome message from JCSC  
President Nitinbhai Shah



## ***Jain Center of Southern California's Phenomenal Growth***

***Jai Jinendra!***

The flow of river nurtures life and does it matter where does the water come from? Which stream, snow, or glacier! Similarly, Kindness, Ahimsa, Politeness, Non-Violence, and humbleness have their roots with dharma or religion! Does it matter which one? Buddha, or Christian, or Hindu, or Jain, or Muslim, or Jewish, Not really!

***"Let the warmth and brightness of the sun melt our selfishness; So that we can Share the Joys and feel the Sorrows of our Neighbors."***

— A Prayer for the World by Rabbi Kushner

I welcome you all with genuine excitement today for the Jain Center Expansion Charity Gala. The present Jain Bhavan was built in 1988 and was soon outgrown by the amount of activities and the tremendous growth in the membership. The community has grown by leaps and bounds in last fifteen years. Just imagine gathering of more than 500 people every other Sunday from September through June at Jain Center for children's classes and adult Swadhyaya! Pooja almost every weekend day if not at the center than at somebody's home! Swadhyaya four days a week in the evening. Dignitaries from India for two to three months in a year, eighteen days of celebration of Paryusan and Das Laxna, etc. etc...the list just goes on!

Jain Center has made significant contribution in many humanitarian and inter-faith activities as well. We organize medical camp and administer free flu vaccines every year. Everybody is welcome to take advantage of it. We contribute towards an annual medical camp in Bidada, India and have made significant contributions to help earthquake victims in Gujarat! We have participated in a variety of interfaith activities in Southern California in last few years.

Jain Center has embarked on expanding the facility to almost four times the current size. When complete the main hall should be able to accommodate more than 1000 people. The facility will also host a unique wooden temple. The facility when complete will have a traditional religious look!

Finally, I thank you all for attending this entertainment evening. I thank you all for being a part of our dream. I ask for forgiveness (Michhami Dukkadam) and your understanding of any shortcomings on behalf of the organizers and the executive committee of the Jain Center of Southern California.

***Nitin Shah, M.D.***

JCSC - President

[www.jaincenter.com](http://www.jaincenter.com)

# **Namokar Mantra**

**NAMO ARIHANTANAM  
NAMO SIDDHANAM  
NAMO AYARIYANAM  
NAMO UVAJJHAYANAM  
NAMO LOE SAVVA SAHUNAM**

**ESO PANCHA NAMUKKARO  
SAVVA PAVA PANA SANO  
MANGALA NAMCHA SAVVESIM  
PADHAMAM HAVAI MANGALAM**

---

**Obeisance to the ARIHANTAS ---  
the embodied, omniscient, enlightened souls.**

**Obeisance to the SIDDHAS ---  
the liberated, omniscient, pure souls.**

**Obeisance to the ACHARYAS ---  
the ascetic leaders.**

**Obeisance to the UPADHYAYAS ---  
the ascetic teachers.**

**Obeisance to all SADHUS ---  
all true followers of the Five Great Vows of in the universe:  
Nonviolence, Truth, Celibacy, Nonstealing, and Non-possession.**

**These five salutations  
Remove all sins,  
And among all great things  
Are the Greatest.**

**This Page sponsored by Temple Community Hospital,  
235 N. Hoover St, Los Angeles, CA 90004 Tel: (213) 382-7252  
Chief of staff: Dr. Jasvant Modi**



## Jain Center Expansion Charity Gala with Lead Performer Shri Ravindra Jain

Welcome to the expansion charity gala for Jain Center of Southern California. I commend you for making a great contribution in the lives of our children and future generation by supporting a great cause.

Tonight we are going to be entertained by one of Bollywood's most recognized and honored song writer, composer and singer – none other than Shri Ravindra Jain. He has traveled long distances, almost the seven seas, to come before us for a musical gala. We are grateful for his dedication in supporting our cause.

Shri Jain has an illustrious and successful career of over 31 years in Indian films and television. He has been feted with numerous awards and recognitions by almost all the notable institutions in India, such as President of India, State governments, and music academies. This year the Lata Mangeshkar National Award was awarded to Shri Ravindra Jain for being the best composer and singer. He is considered in the top ten remarkable composers and singers in Bollywood Industry.

Mr. Jain started his professional career in 1972 with a first recorded song in the film “Sil Sila Hai Pyar Ka” and also composed his first film in 1972 titled “Kaanch aur Heera”. His numerous films include Saudagar, Chor Machaye Shor, Ram Teri Ganga Mailee, Chitchor, Geet Gata Chal and Henna. Leading singers have sung the songs for Mr. Jain and he has been instrumental in the discovery of many of today's popular singers.

Mr. Jain has also composed music for many of the most successful serials on television, such as Ramayan, Shri Krishna, Jai Hanuman, Satyavadi Harishchandra and Vansh. His private musical albums have included Merc Mahaveer, Jai Bahubali, Jai-Jai Shri Krishna, Jai-Jai Shri Rama, Padmavati Mata and many more.

He is a prolific singer and has a commanding stage presence. He has performed at several charitable events in support of a variety of causes. He has performed in numerous countries including USA, UK, Canada, Germany, South Africa and in Gulf countries.

Mr. Jain has been very generous with his time and effort to come in front of us to celebrate the expansion of Jain Center of Southern California. JCSC and the program committee are thankful for his cooperation in putting together this excellent entertainment program.

Once again, thank you all for coming. Sit back and enjoy the show.

**Jasvant Modi and the Program Committee**

*Best Wishes for Grand Success*

*to*

*Jain Center of Southern  
California*

*from*

*Dr. Jaldeep & Nita Daulat*

## LIST of SPONSORS for TONIGHT'S PROGRAM

Presenter: Hamilton Brewart Insurance Agency

Event: Dr. Jaldeep & Nita Daulat

Gold Sponsor: Westar Funding

Grand Sponsors: Dr. Manibhai/Savitaben Mehta  
MetLife - Raj Gadhia & Vikram Sheth  
Chander/Rekha Mittal & Gordhan/Saroj Patel  
Dr. Jasvant/Meera Modi  
Anil/Kalpana Shah  
Harshad/Raksha Shah  
Kishor/Rekha Shah

### Patron Sponsors:

Amrit/Sheela Bhandari	Arun/Indu Jain
Tarun/Chandra & Aashish Jogani	Shashikant/Renuka Jogani
Rahul Parikh & Kalpesh Jhaveri	Arun/Rekha Parekh
Jayesh, Jitesh Joshi & Ravi Patel	Mike/Patty Nijjar
Sharadaben Jayantilal Kothari	Bhikhubhai B. Patel
Mukesh/Meera, Dipak/Hina Sagar	Kamal/Alka Patel
Dr. Jayesh/Ramila Shah	Dr. Kirit/Nagini Shah
Kirti/Sudha Shah	Rashmi/Kusum Shah
Ashwin/Rashmi Shroff	Ukabhai/Nalini Solanki
Khushal/Jyoti Vira	

# *“Jai Jinendra”*

## Support our Jain Center by using Westar Funding for all your Financing Needs

Westar will donate part of the loan fees to the Jain Center Building Project!

INTEREST RATES ARE LOW! *Now is the Right Time to Re-Finance!*

## **0-Point, 0-Cost Loans Available**

### Save Thousands of Dollars!

COMING SOON TO PIONEER BLVD



• WESTAR PLAZA •

*Specializing in:*

- Residential Loans
- Commercial Loans
- SBA Loans
- Apartment Loans
- Business Loans
- Hotels/Motels



AJIT 'A.J.' DUDHEKER  
President



**1-800-808-FUND**

18000 S. Pioneer Blvd., Ste 202, Artesia CA 90701

email: [aj@westarfunding.com](mailto:aj@westarfunding.com)

[www.westarfunding.com](http://www.westarfunding.com)

**CALL NOW**



## જીન મંદિર જતાં

પલ્લવી દોષી

જીન મંદિર જતા મન વિચારે ચઢે છે. જીવનના સરવાળા બાદબાકી વાગોળતા એકાએક એક જ્યોતી પ્રગટે છે. જૈન સંટરનું વિકસતુ સ્વરૂપનાં સ્વપ્નો સાંપડે છે. અને હૈયુ હરખથી ઉભરાય છે. વડીલોની દીર્ઘદષ્ટિ, કસબીઓની કારીગરી, હોશીલાઓની કાડમારી, દાનવીરોના દાન અને મેમ્બરીની મહત્વકાંક્ષાથી આ સ્વપ્ન સાકાર થતું જણાય છે. એ દિવસો ક્યારે આવશે કે જ્યારે આનંદનો ઉત્સવ હશે અને ઉત્સવનો આનંદ હશે.

પાછું ફરીને જોતાં એ દિવસો યાદ આવે છે જ્યારે આપણે સૌ અભ્યાસ, અનુભવ કે પ્રગતીમય જીવનની શોધમાં આ સમૃદ્ધ ધરતી પર આવ્યા હતાં. આંખો અંજાઈ જાય તેવી જાહોજલાલી અને આધ્યર્થ્યમય આધુનિકતા જોઈને રાજી તો થયા હતાં, પણ સાથે સાથે ક્યારેક એવા વિચારો પણ આવતા કે આ દોડમાં આપણે આપણા ધાર્મિક સંસ્કારો સાચવી શકીશું? મન પસંદ આ જૈન જીવનનું જતન કરી શકીશું? ભાષા ભુલાઈ જવાનો પણ ડર રહેતો. દેવ ગુરુ શાસ્ત્રને ફરી પામીશું કે કેમ? અવાર નવાર આવા સવાલો ઉઠી ઉઠીને શમી જતા, તો ક્યારેક શમાવી દેવા પડતા હતા.

જૈન ભવન મળતાં એ દિવસો ગયા અને ડર પણ ગયો. રવિવારે સવારે દેવ દર્શનથી અઠવાળિયુ શરુ કરી શકીયે. ગાડીમાંથી ઉતરતાં જ સાધર્મીઓ નજરે ચઢે. જય જીનેન્દ .. જય જીનેન્દ નું કાનમાં ગુંજન રહે. પ્રગથીયા ચઢતાં જ પ્રભુ દર્શનને પામીયે. આપણા સ્વાધ્યાયકારો અહીં નિયમીત સરસ્વતી વહાવે અને તેમાં તરબોળ થઈ આપણા વિચારોમાં વધુ શુદ્ધતા લાવી શકીયે. બાળઉછેર માટે ઉચ્ચ સંસ્કાર સિંચનનું સાધન મળ્યું. ભાવતા ભોજન તો જૈન સેન્ટરે આપણને પીરસ્યા, તો આજે આ આનંદ સાગર કેમ ઉછળી રહ્યા છે?

એમ લાગે છે કે આધ્યાત્મીક રસ્તાના એક એવા તબક્કા પર આવીને ઉભા છીએ કે જ્યાંથી ભૂતકાળ તરફ નજર કરતાં ઇચ્છા, આશા અને જંબના ઉભેલી દેખાય છે. અને ભવિષ્ય તરફ જોતાં પ્રકાશ, નિષ્ચય અને ગૌરવ ઉભેલી દેખાય છે. કેલીકોર્નીયામાં જૈનોનો પાયો મજબૂત તો હતો જ. હવે તેના પર સુંદર ઇમારત ચણાતી દેખાય છે. આપણા પછીની પેઢીઓનું જૈન ભવિષ્ય ઉજળું ભાસે છે. આપણને ધર્મ, ભાષા અને સંસ્કૃતીનો જે વાળમાચ્યો વારસો મળ્યો છે, તેમાં ઉમેરીને હવેની પેઢીને આપી શકીશું એવા એવાણના આયોજન છે.

તો ચાલો, આપણે સૌ સ્ફર્ષ આ expansion ને વધાવી લઈએ. અને યથાશક્તિ તન-મન-ધન અર્પવા તત્પર રહીયે એજ અભિલાષા. આ સુકાર્યના કાર્યકર્તાઓને સમ્બોધવા શબ્દો ઓછા પડે છે. એમ છતાં .. .. ફરી ફરી એમને અભિનંદન અને સૌને શુભેચ્છાઓ.

જય જીનેન્દ

પલ્લવી દોષી



## Anne Tahim,

An Accountancy Corp.  
<http://www.annetahim.com>  
714-772-4744

Anne Tahim, An Accountancy Corporation, is a full service accounting firm providing tax and accounting services to small to medium size businesses.

\*\*\*

We provide Tax planning & preparation services for individual and businesses, Compilation, Review and Audits, Payroll Services, Estate & Financial Planning, Business Valuation, Retirement Planning

\*\*\*

We also provide computer software and hardware support including Network, Servers and workstation configuration and installation with an ongoing support.

\*\*\*

We have been serving in Southern California since 1980 with clients all over the United States.

Our qualified staff is capable of speaking several languages to serve you better.

\*\*\*

Please call us at **714-772-4744**

or email at [atahim@annetahim.com](mailto:atahim@annetahim.com) For all your tax & accounting needs

## Amit R. Gandhi, LUTCF

AUTHORIZED AGENT



Blue Cross  
of California



Blue Shield  
of California

**800-379-0978**

**562-865-1333**

Fax: 562-865-1175

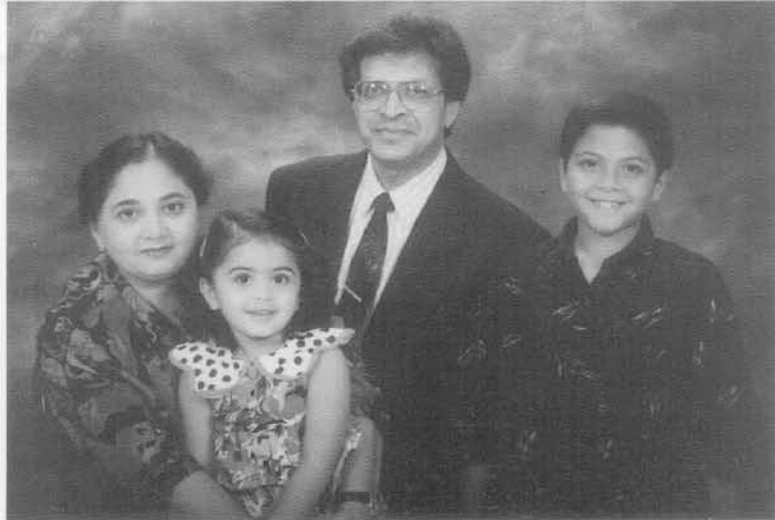
18500 Pioneer Blvd., Suite 202, Artesia, CA 90701  
CALicence #0712405

Website: [www.gandhiinsurance.com](http://www.gandhiinsurance.com)  
E mail: [amit@gandhiinsurance.com](mailto:amit@gandhiinsurance.com)

VISITOR'S HEALTH INSURANCE

We Wish All the Best  
and Great Success to  
*Jain Center of  
Southern California*

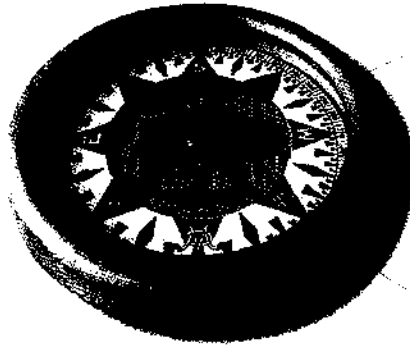
From: Modi Family



**Shruti, Rushabh,  
Meera & Jasvant**



*always a step ahead*



## True leaders command new direction.

1997

First Korean-American bank to open supermarket branch offices.

1998

First Korean-American bank to be listed on NASDAQ.

1999

First Korean-American bank to offer online banking.

2000

First Korean-American bank to have national branch office network.

*In the past, we paved new ways that others didn't dare to go and brought new ideas that others did not think of. Today, we continue the spirit of innovation to lead the Korean-American banking industry for you. Always a step ahead...*



*always a step ahead*

**NARA BANK**  
www.narabank.com

© 2003 Nara Bank, N.A. Printed in USA. All rights Reserved.



*Count on us for...*

Skilled nursing service

Physical, Occupational & Speech Therapy

Personal & Physical Care

Certified Home Health Aides, Medical Social Worker

Contact: Mrs. Meena Gadhia

**VISIONES HOME HEALTH**

Certified Medicare Health Care Agency

3325 Wilshire Blvd., #500

Los Angeles, CA 90010

Ph: 818-269-3902/213-739-8006; Fax: 213-739-8043

## JCSC EXECUTIVE COMMITTEE - 2002/2003

PRESIDENT: Dr. Nitin Shah  
VICE PRESIDENT: Ramesh Doshi  
SECRETARY: Ashvin Sheth  
TREASURER: Ashok Savla  
PUBLIC RELATIONS: Narendra Maniar

DIRECTORS: Amrit Bhandari, Vijay Chheda,  
Narendra Jain, Ramesh Kothari,  
Jasvant Modi, Dinesh Shah,  
Prafulla Shah, Sachin Shah,  
Vipul Shah & Virendra Shah

### BUILDING COMMITTEE MEMBERS

Sumati Shah (Chairperson)  
Mahendra Desai  
Navin Gangar  
Shashikant Jogani  
Chandrakant Parekh  
Heman Shah  
Kantibhai Shah  
Rajen Dhami  
Virendra Shah

### BUILDING SUBCOMMITTEE LEADERS

Nalin Chheda (Fire Sprinkler)  
Vijay Chheda (Acoustical)  
Shailesh Desai (Civil & Landscape)  
Shirish Desai (Architectural)  
Dhiren Mehta ( Kitchen)  
Jaswant Mehta (Audio/Video/Security)  
Manilal Mehta (Finance)  
Anand Shah (Information Tech.)  
Hasendra Shah ( Interior Decoration)  
Manu Shah ( Stone Installation)  
Manesh K. Shah (Accounting)  
Nitin Shah (Legal)  
Satish Shah (Structural)  
Virendra Shah (Wooden Temple)  
Sudhir Sheth ( Electrical)  
Suresh Sheth (Mechanical)  
Jagdish Vora ( Drawing Control)

# Compliments to Jain Center Of Southern California

We offer FULL BODY SCAN

For J.C.S.C. members for \$ 399 per person. This is ½ price

(Reg price \$ 800) Heart Scan \$ 125

Detect cure early! Why wait?

Only Indian Physician in Orange County offering FULL BODY SCAN

Using ultrafast CT, Lifeview's early detection system can uncover heart disease, lung disease, many types of cancer, kidney stones, gall stones, aneurysms, and arthritis quickly and painlessly without sedation or needles.

The Full Body Scan includes Heart, Lung and Abdominal Scans

Review your results with a Board Certified Physician.

State of the art equipment with the best service at the most affordable price.

Contact us at:

LIFEVIEW IMAGING

ARUN D. PATEL, M.D.

907 WEST WILSHIRE

FULLERTON, CA 92832

PHONE: 714-871-6161



**Jai Jinendra**

May the spirit of goodwill enter all our hearts.  
May we all sing in chorus the immortal song of human concord.  
With Best Compliments to J.C.S.C. from:  
Jiten, Harshida, Gaurav, Payal & Ankit Vasa



**Jiten M Vasa, D.D.S.**  
**Lakewood Family Dentistry**

11455 East Carson St. # E  
Lakewood, CA 90715  
**562-860-7116**

Don't waste yourself in rejection, nor bark against the bad,  
but chant the beauty of the good.

Our heartfelt compliments to  
**Jain Center of Southern California**

Dr Arvind & Jayshri Mehta  
Mamta, Minal & Raj

**Arvind Mehta, M.D.**  
**Internist Nephrologist**  
**Pro Health Partners**  
**Pacific Hospital of Long Beach**  
2690 Pacific Avenue, Ste 200  
Long Beach, CA 90806  
Ph: 562-424-4447

# JCSC Chronology of Events in our Phenomenal Growth

JCSC established on September 15, 1979

Mahavir Mandal started in 1980

First JAINA convention held in Los Angeles in 1981

Decision to build Jain Bhavan reached in 1982

Jain Center Youth Council (JCYC) formally established in 1984

Current building site in Buena Park acquired in 1985

Ground breaking performed on March 6th 1987

Jain Bhavan formally opened on July 2nd 1988

Wooden temple - a model of Palitana acquired in 1988

JCSC reached the debt-free status in December 1989

Several community outreach initiatives such as Share and Care Clothes Drive and Medical Camps started in 1990-1991

Pratistha of Ghantakaaran Mahavir and Devi Padmavati performed on July 1, 1990

Adhar Abhishek pooja performed on June 29th 1991

Adjacent land acquired in 1993

First Ahimsa Day celebrated on October 2nd 1993

JCSC acquired a tax exempt, non-profit California Corporation status on July 10th 1994

A group for youth over 16, named Jain Association of Young Adults (JAYA) formed in 1994

The Jain Art Exhibition - "The Peaceful Liberators" held at LA County Museum of Arts from October 1994 to January 1995

Building Committee for the current expansion established in 1996

The next door Post Office building was acquired in July 1997

An additional parcel of land approx 12,000 sq ft was acquired in 1997

Jain Bhavan Expansion Project was conceived and proposed in 1998

City permit to proceed with the construction obtained in 2000

Design and Development of the new facilities continued until 2002

Ground breaking performed on February 18th 2002

General Contractor for the project selected in September 2002

Construction for expansion started in October 2002

Shila puja held on November 24th 2002

Shila Sthapan performed on March 15th 2003

**We Identify the Allergens and Make patients Immune to their Allergies.**



Itchy, Stuffy,  
Runny, Bleeding,  
Blocked Nose,  
Frequent Sneezing



Itchy,  
Watery, Swollen  
Eyes, Bags  
Under Eyes



Frequent  
Headaches, Sore  
Throats, Frequent  
Clearing of  
Throat, Mucus, &  
Postnasal Drip



Itchy Dry Skin,  
Frequent Hives,  
Eczema and  
Itchy Skin  
Rashes



Cough, Shortness  
of Breath,  
Wheezing, Asthma  
Attacks

***ALLERGIST***

***Time to Desensitize  
Allergies***

Norwalk  
13330 Bloomfield Ave., #210

Pomona  
180 W. Willow Street.  
(Accept Medi-Care, Medi-Cal & Private Ins.)

**Allergy Asthma Sinusitis Medical Clinic Inc.,**

Allergy, Asthma, Sinusitis Specialist For All Age Groups

**Divyang Trivedi MD**

Tel: 800-4-Asthma, 800-300-ASMA, (562) 864-4500, Fax: (562) 864-4959

Web: [www.8004Asthma.com](http://www.8004Asthma.com), E-mail: [Allergist@hotmail.com](mailto:Allergist@hotmail.com)

With Best Compliments from

**UDAY N. SHAH D. D. S. &  
POONAM U. SHAH**

**Jain Center of Southern California**

**MORENO VALLEY**

**(909) 697-7750**

**[www.Towngatedental.com](http://www.Towngatedental.com)**



With Best Compliments to  
Jain Center of Southern California

For over 130 year, MetLife has been helping people become financially secure, with such products as mutual funds, annuities and life insurance.

To find out how we can help you secure your financial future, contact



**Raj Gadhia**  
Financial Service Executive  
550 N. Grand Blvd,  
Suite 1850  
Glendale, CA 91203  
Lic. No. 0B42233  
818-242-6482



**Vikram K. Sheth, MBA, CLU, ChFC**  
Financial Planner  
550 N. Grand Blvd,  
Suite 1850  
Glendale, CA 91203  
Lic. No. 0534418  
818-627-4128

**GET MET, IT PAYS®**  
**MetLife®**

Metropolitan Life Insurance Company, New York, NY  
Mutual Funds offered through MetLife Securities, Inc., One Madison Avenue, New York, NY

Life's Little Instructions

Count your garden by the flowers,  
Never by the leaves that fall.  
Count your days by golden hours,  
Don't remember clouds at all.  
Count your nights by stars, not shadows.  
Count your years with smiles, not tears.  
Count your blessings, not your troubles.  
Count your age by friends, not years!

With Best Compliments

to

Jain Center of Southern California

from

Kruti, Niraj

Manjri, Rajen Dhami

*Our Best Wishes for Continued Success*

*to*

*Jain Center of Southern California*

*from*

*Desai Construction & Developers Inc.*

*Mahendra, Pratibha, Anjali & Chirag Desai*

***JAI JINENDRA  
&  
BEST WISHES  
to***

***JAIN CENTER OF SOUTHERN CALIFORNIA***

***FROM:***

***DEVKABEN KUNVARJI SAVLA  
KALPANA POPAT SAVLA  
VIMLA JITEN SHAH  
KUSUM JAYANTI SAVLA  
LATA JETHALAL SAVLA  
HARSHANA ASHOK SAVLA***

***JAINY, PUJA, AMI, NEELAM, MEGHA  
BHAVIN, JINESH, RONAK, GAUTAM  
PARAS, CHRIS***

***JAINAM JAYATI SHASHNAM***

**Jain Center of Southern California  
Expansion Charity Gala  
May 2003**

**Event Program Committee**

Dr. Jasvant Modi  
Anil Shah  
Shashi Jogani  
Dhiren Mehta  
Dr. Manibhai Mehta  
Narendra Maniar  
Babubhai Patel  
Vipin Vadecha  
Harkishan Vasa  
Jitendra Vasa  
Vijay Chheda  
Ashok Savla  
Dr. Dhirubhai Shah

Dr. Nitinbhai Shah  
Ramesh Doshi  
Bharat Patel  
Kishore Shah  
Harshad Modi  
Amar Shah  
Narendra Jain  
Anand Shah  
Bhoomika Khona  
Surbhi Mehta  
Amrit Bhandari  
Rajen Dhami  
Gordhanbhai Patel

**Sincere thanks to all volunteers and organizers  
for making this event successful.**

**Jain Center of Southern California**

This page sponsored by PBA Printing,  
Ashok & Parul Shah



**Anil & Kalpana Shah**  
**Kahan Co. Inc.**  
**DBA Cal-DEC**

14562 Manzanita Drive  
Fontana, CA 92335

909-355-8505  
909-355-4683 (fax)

**Mfg. of Automotive Chemicals**  
**Silk Screen Printing of Plastics**  
**Bottles - Jar - Tubes - & Glass Bottles**

**M O N E Y   O N   S A L E**

**Refinance Your Home Now**  
**\$\$\$..Let us Save You..\$\$\$**

Purchase ..... Refinance ..... Cash Out  
We Guarantee Lowest rate with Best Service

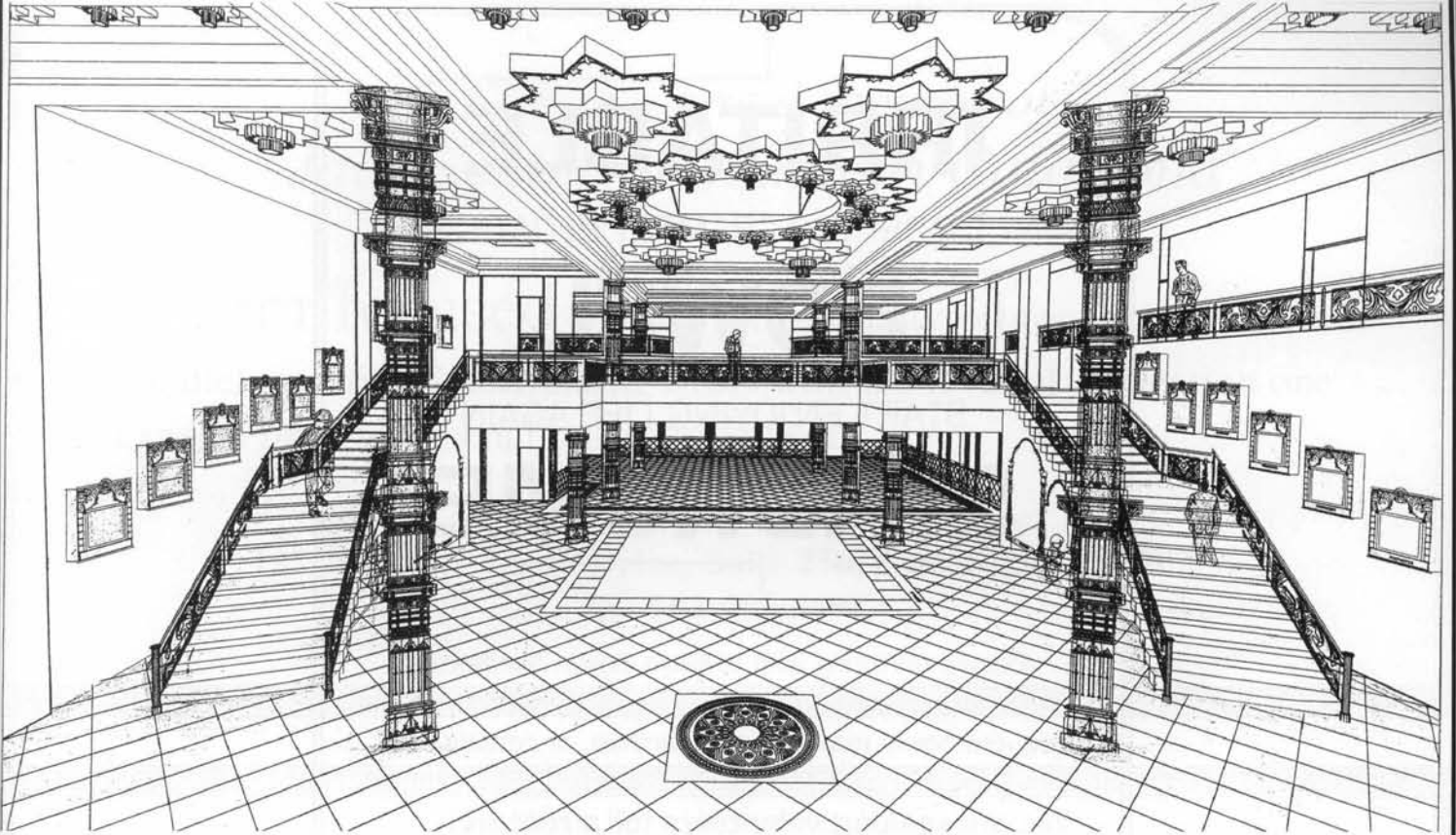
**Fixed Rate Currently Under 5.0 %**

No Points and No Out of Pocket Cost  
Quick and easy Approval; Free Credit Check  
Free Complimentary Pre-approval

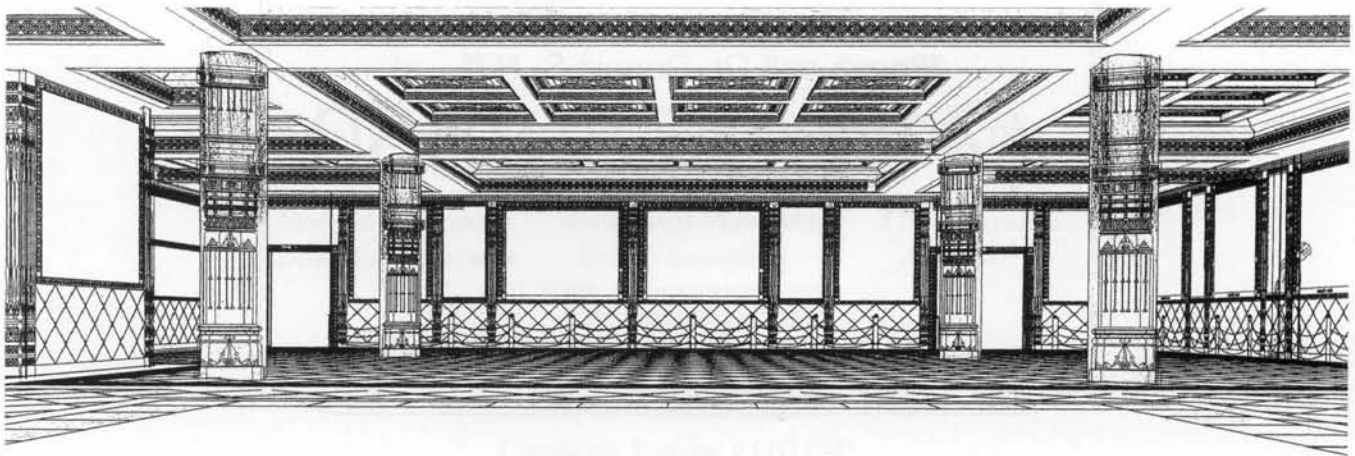
**!!!Call Toll Free & Get an Answer Before You Hang Up!!!**  
**Equity Financial Group Inc - A Nationwide Lender**  
**17744 Sky Park Cr., Suite 205, Irvine, CA 92644**  
**Toll Free (866) 257 3863**

Apply Online at [WWW.EquityFinancials.com](http://WWW.EquityFinancials.com) or Cal (949) 608 4900  
Banir Ganatra x-3006; Gary x-3007; Adam x-3005; Richard x-3009; Nate x-3004

## Main Entrance to the Expanded Jain Center



## New Dining Hall



Page sponsored by  
Manibhai/Savitaben Mehta, Ashish/Asha, Minesh/Nisha and Karina, Shaina

# **IRRITABLE**

PAIN? DIARRHEA? CRAMPS? BLOATING?

# **BOWEL**

START ENJOYING LIFE AGAIN

# **SYNDROME**

People suffering with Irritable Bowel Syndrome usually experience a change in bowel pattern, such as frequent bowel movements, diarrhea, or constipation.

We are **seeking volunteers for a research study of an investigational medication** for diarrhea-predominant Irritable Bowel Syndrome.

Study participants must have diarrhea predominant IBS.  
If you are 18 or over, and otherwise healthy, you may be qualified to participate.

**Please call Dr. Dennis S. Riff at:**

## **(714)-778-8850**

**Study participation will be at no cost to you.**



**KLING, LEE & PATHAK**  
CERTIFIED PUBLIC ACCOUNTANTS

*KLP is a proud sponsor of  
Jain Center of Southern California*

**A firm focused** on providing quality professional services parallel to national accounting firms with the level of dedication one expects from a personal business advisor.

**12750 Center Court Drive, Suite 250, Cerritos, CA 90703  
Tel: 562-402-9691**

With Best Wishes to JCSC  
Who would you call for Employee  
Benefits for your business?

**Bhoopi Kohli, of course!**

Chartered Financial Consultant; License # 0630453

Call us at 1-800-966-7744

*We speak English, Hindi, Punjabi, Gujarati, Marathi, Telugu and Tamil*

Medical Insurance  
Disability Insurance

Retirement Plans/401K  
Dental Insurance

Life Insurance  
Annuities



Corporate License # 0B72747  
17822 E. 17<sup>th</sup> Street # 104 Tustin CA 92780  
[www.einsuranceland.com](http://www.einsuranceland.com)  
[bhoopi@einsuranceland.com](mailto:bhoopi@einsuranceland.com)

Dedicated to providing caring financial solutions since 1982



# JCSC Supported Humanitarian Activities

Vijay Chheda-Trustee of Bidada Sarvodaya Trust  
Dr Manibhai Mehta-Director of Medical Camp.

Shree Bidada Sarvodaya Trust is a non-profit organization that operates a fully equipped hospital in Bidada, Kutch, Gujarat. In the past 30 years more than 2.2 million people have been treated under the auspices of this trust. The Trust is well known for its annual medical camp. At the annual camp in January 2003, more than 18,000 patients from over 1200 villages of Gujarat, Maharastra and Rajasthan were examined and treated.

The Jain Center of Southern California supports the work of the trust in many ways. Each year the members of JCSC donate money generously to this worthy cause. In the past 15 years over 100 JCSC members have donated their time and talent at Bidada during the January medical camps. There are dedicated JCSC doctors & volunteers that return year after year to serve the people of this region.

After the massive earthquake on January 26<sup>th</sup>, 2001 our Jain Center sent the first check to Bidada to start immediate treatment of earthquake victims. With the generous support of JCSC and other organizations, the Bidada trust was able to treat over 30,000 earthquake patients, perform 3,000 surgeries and provide food, shelter and clothes to more than 200,000 people. A disaster management team including Dr. Bala, Dr. Manibhai Mehta, Popat Savla, Rashmi Shah, Ukabhai Solanki and Govind Lalani arrived shortly after the earthquake to assess the damage and provide help where required. They continue to work with the Gujarat government to set up many disaster management centers for future calamities.

The trust has realized the need for permanent rehabilitation and as a result has started the rehabilitation center which includes Physiotherapy, Occupational Therapy, Prosthetic & Orthotic Department, Speech & Audiology Department. The Jain Center has sponsored the Orthotic Department in the Rehabilitation Center. JCSC has also provided to rebuild homes for Jain & non-Jain earthquake victims, health facility and school.

The next medical camp will be from Jan 2 – 20<sup>th</sup>, 2004 covering 20 medical specialties. Bidada Trust invites all JCSC members and other like minded individuals to participate in the upcoming camp. For more information please call

Vijay Chheda Tel. (714)573-1324; E mail - vijaychheda@hotmail.com

Dr Manibhai Mehta Tel.(714)898-3156; E mail - Manilal.B.Mehta@kp.org

*With Best Compliments  
to  
Jain Center of  
Southern California  
from*

Mrs Vasantben K. Shah

K. T. Shah, MD

Baiju Shah

Gopi Shah

Saurabh Shah, JD

Mrs. Vineesha Patel, MD

**SAFETY - SECURITY - SERVICE**

**STATE BANK OF INDIA (CALIFORNIA)**  
**(Member FDIC)**

**Visit us on the WEB [WWW.SBICAL.COM](http://WWW.SBICAL.COM)**

**SEND MONEY TO ANY SBI BRANCH IN INDIA  
AT THE MOST COMPETITIVE RATES**

Rupee drafts of Rs. 100,000 & above to any SBI branch in  
India issued free of charge

Attractive interest rates for local CDs

Commercial loans for real estate / inventory / receivables

Commercial letters of credit and standby letters of credit

Safe deposit boxes in two convenient sizes

ATM services

**STATE BANK OF INDIA (CALIFORNIA)**  
**18191 S. PIONEER BLVD., ARTESIA, CA 90701**  
**(562) 865-5009**

**1-800-252-7250 (TOLL FREE)**

**E MAIL: [SBICART@EARTHLINK.NET](mailto:SBICART@EARTHLINK.NET)**

# **SARVA DHARMA SAMBHAVA**

**There are many paths to the mountaintop.  
Each is unique and acceptable.**

## **JAI JINENDRA**

### **NAVIN and PRATIMA DOSHI**

**With Best Compliments  
from**

## **Kush International, Inc.**

**27 Vienne**

**Irvine, CA 92606, USA**

**Tel No. 949-653-7770**

**Fax No. 949-786-2777**

**E Mail: Kush1777@aol.com**

**Mobile 949-400-3204**

## **Exporters of Almonds**



*Jai Jinendra*  
*With Best Compliments to*  
*Jain Center of Southern California*

**Siddharth Shah, CPA**

Financial Advisor  
Business Financial Advisor  
American Express Financial Advisor Inc.  
2200 E. Route 66, Suite 100  
Glendora, CA 91740  
(626) 852-0023 ext. 314  
sidd.p.shah@aexp.com



American Express Financial Advisors Inc. Member NASD. American Express Company  
is separate from American Express Financial Advisors Inc. and is not a broker-dealer.  
1999-2002 American Express Financial Corporation. All rights reserved.

With Best Compliments from  
Pioneer Financial Corp.

**R e f i n a n c e \* P u r c h a s e**

LOWEST Rate Guaranteed!!!

Absolutely NO OUT OF POCKET COST

True \$0 Cost Loan  
90% less Paperwork  
Parimal & Kalpana Shah  
562-924-5422



## Jain Pathshala (JCYC) 2003

### Sailes Jain

"Without Jainism in my life, I would be a lost soul. To me being a Jain is a privilege."

Sonal Sheth

A classroom is where everyone learns, the student and the teacher. Kaanan Shah

Today the youth in America have plenty of material things: cars, houses, brand name clothes, computers, video games, etc. However, they often lack a spiritual aspect to their lives; things such as: faith, ceremonies, morality and a spiritual connection. The Jain youth in America are fortunate enough to benefit from a sense of spirituality in their lives, an aspect they can draw on whenever they are in the midst of trials and tribulations in their adulthood. Many young adults do not have the pillar of faith to support them when they make the journey from adolescence to adulthood.

The youth are immersed in the psychosocial crisis of defining their identity and are beginning to decide for themselves what they will ultimately believe in spiritually, this is an opportune time to instill in them the core values of Jainism. It can be a time for spiritual growth, introspection and implementing values.

The ideal for moral education of the youth has always been a matter of importance to the Jain parents. Public schools once placed the building of character and moral discernment on a par with developing the intellect. However, today the formal curriculum in the schools our children attend is lacking moral education. The focus has become skewed; additionally, the media tends to transmit messages that are confusing and corrupting at worst.

Good moral character is not an innate feature; it is instilled in an individual by experiences and role models. A conscientious effort is made to help the youth develop the values because the character and conduct of our youth reflect upon the community. Hence, every adult has the responsibility to teach and model core ethical values to promote the development of good character.

Before the Jain Center came into existence in 1988, approximately fifty students attended Jain Pathshala at the homes of individual teachers. A year later enrollment in Pathshala classes jumped to seventy students being taught by three teachers. Last year a record number of 365 students enrolled in Pathshala. A volunteer staff of 52 teachers and ten administrators leads this surge in enrollment. The curriculum has been expanded to include classes on Jainism, Indian history, culture, and Gujarati and Hindi languages. Swadhyay and English classes are also offered to the adults. A Jain Study Group began in 1997 for young adults, this class began with seven students enrolled, and today the enrollment exceeds 55 students. On these days, more than 500 plates of snacks are served.

continued on next page

The Pathshala teachers are dedicated volunteers. They are devoted individuals determined to teach the Jain religion and heritage to the children. They dedicate many hours of hard work to prepare and research the curriculum. Most importantly, they provide a cordial and friendly atmosphere for children. The success of JCYC is the culmination of their heroic endeavors. The following testimonial from a parent sums up the sentiment of all the parents whose children come to the Jain Center: "We are very happy that our children have a place to learn about Jainism and Indian culture and where they can meet children with similar backgrounds and philosophy."

If we want our youth to succeed, pleasure should mingle with instruction. They should experience activities that are challenging, inspiring and fun. JCYC children have various activities during the year besides religious studies. An executive committee of children is selected to serve a one-year term. The committee has the responsibility of planning and conducting activities for the children throughout the year under the guidance of a coordinator.

JCYC activities during a typical year include a picnic in the park, an outing to the beach, roller-skating, ice-skating, and a trip to a local amusement park. Also, children prepare stage performances during two of our religious holidays, creating art projects, and participating in a "Fun and Games" day. Children volunteer to help out at various events at the Jain Center including an annual Medical Camp.

JCYC also organizes an annual four-day winter camp retreat to the mountains. This is a unique experience for many children, because some of them part with their parents the first time. In addition to learning religion, they learn to take care of themselves and help others. They make new friends while having fun with the old ones. At the 2002 JCYC Winter Camp, held in the San Bernardino Mountains, there were 130 children, 15 youth volunteers and 15 adult volunteers.

An annual forum is also held for the teenagers of JCYC. A panel of about ten young adults who grew up in America with Indian values and heritage discuss the trials and tribulations about growing up with two extremely different cultures. The panel provides valuable counseling to the children to deal with their parents as well as their American peers. The same panel also has a forum with the parents of teenage children as well. They provide them with insight on teenage behavior, and give them suggestions on how to deal with the concerns they may have raising their children in America.

JCYC has contributed magnificently to the success of our Jain Center. The children look forward to coming to the Jain Center and take a genuine interest participation in the activities of the center. They are encouraged to socially interact with their peers. As a result they have strong social bonds and they realize they are the beneficiaries of a rich and glorious culture. In JCYC we nurture our future because these children are the future of the community.

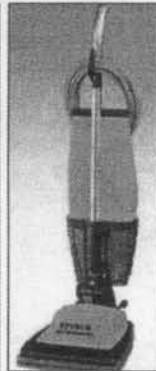
*Best Wishes*  
to  
*Jain Center of*  
*Southern California*  
from  
*Mahesh and Usha Mehita*

**Attention Hotel / Motel Operators**  
**Come to One Source for All Your Supplies**



**HOTEL MOTEL  
SUPPLIES**

- Soaps
  - Shampoo
  - Towels
  - Bedspreads
  - Linen
  - Blankets
  - Freshners
  - Paper
  - Cups
  - Key Tags
  - Vaccums
  - Garbage Bags
- and all kinds of Operational Supplies



**CALL FOR OUR LOW PRICES**

**AMERICAN TEX-CHEM CORPORATION**

**Tel: (909) 383-8626, 800-650-3360**

**Fax: (909) 383-8628**





*With Best Compliments  
TO  
The Jain Center of Southern California*

*FROM  
Your Neighborhood Realtor*

**Charu Maniar**



**Direct: 562-881-1211  
Off: 562-924-3381 ext 371  
Fax: 562-924-5951  
Home: 562-402-8117  
562-924-6055**



**"To the world, you may be one person;  
but to one person, you may be the world."**

*WITH BEST COMPLEMENTS  
TO  
JAIN CENTER OF SOUTHERN CALIFORNIA*

*FROM*

*Veeral*

*Salil*

*Sachin*

*Sateen*

*Veena & Rohit*

**LIVE SIMPLY SO THAT OTHERS MAY SIMPLY LIVE**

# Medical Camp Activities at Bidada Supported by JCSC



Patient with abnormal ear  
prior to surgery



Child after undergoing  
multiple surgeries



JCSC President Nitinbhai Shah and  
JCSC members with donated equipment

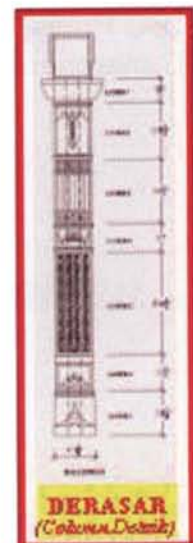
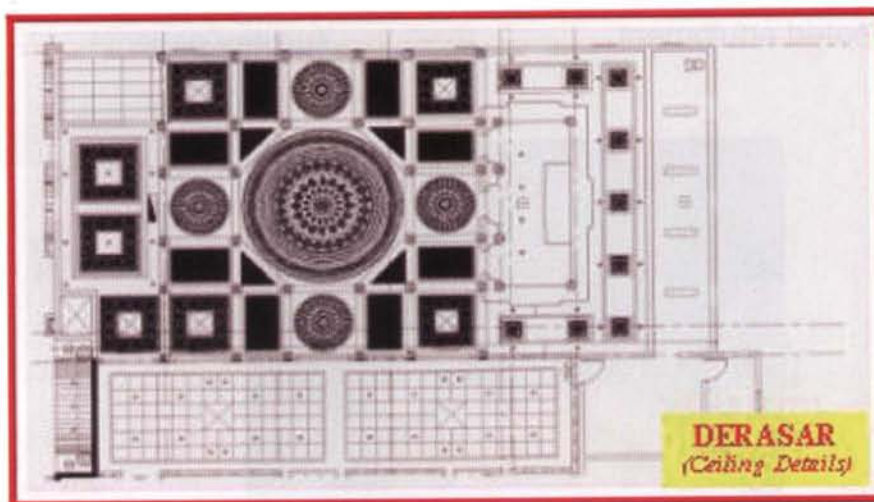
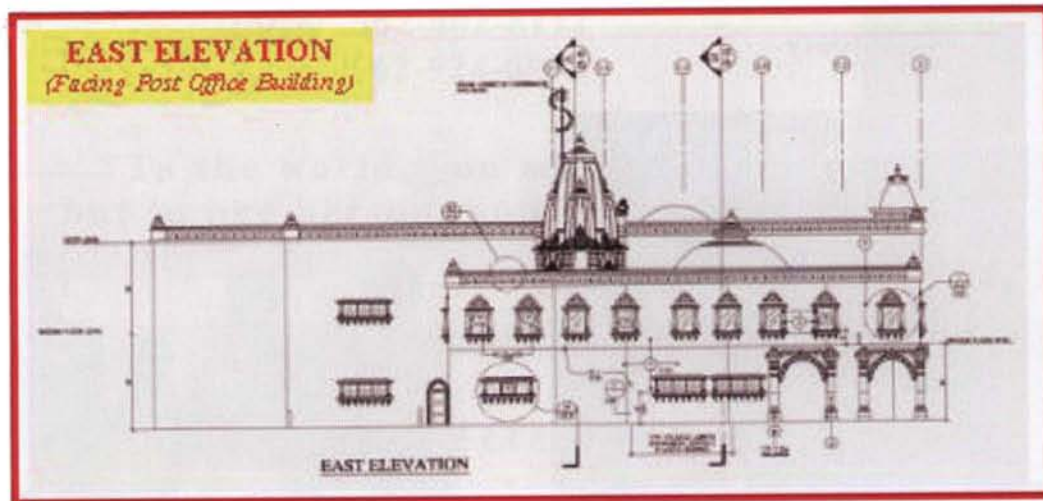
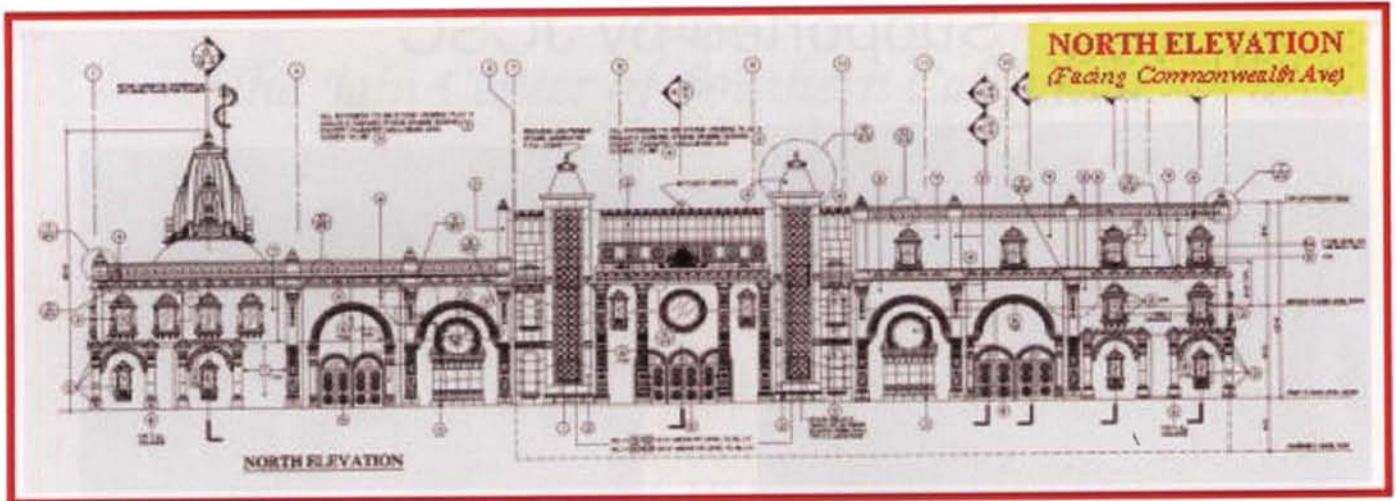


Dr. Ashish Mehta (far right) with eye  
surgery patients

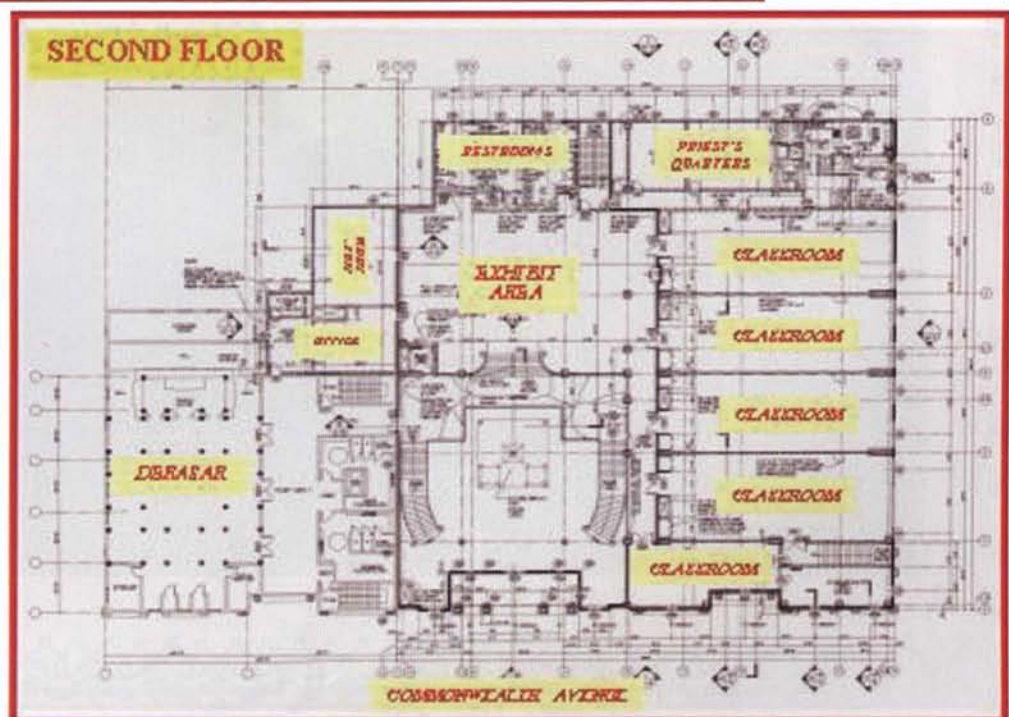
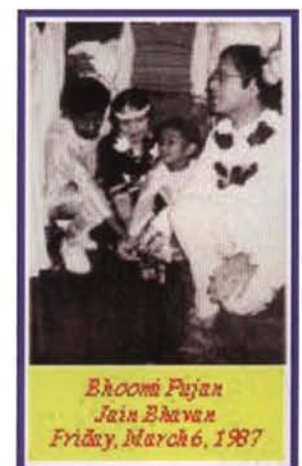
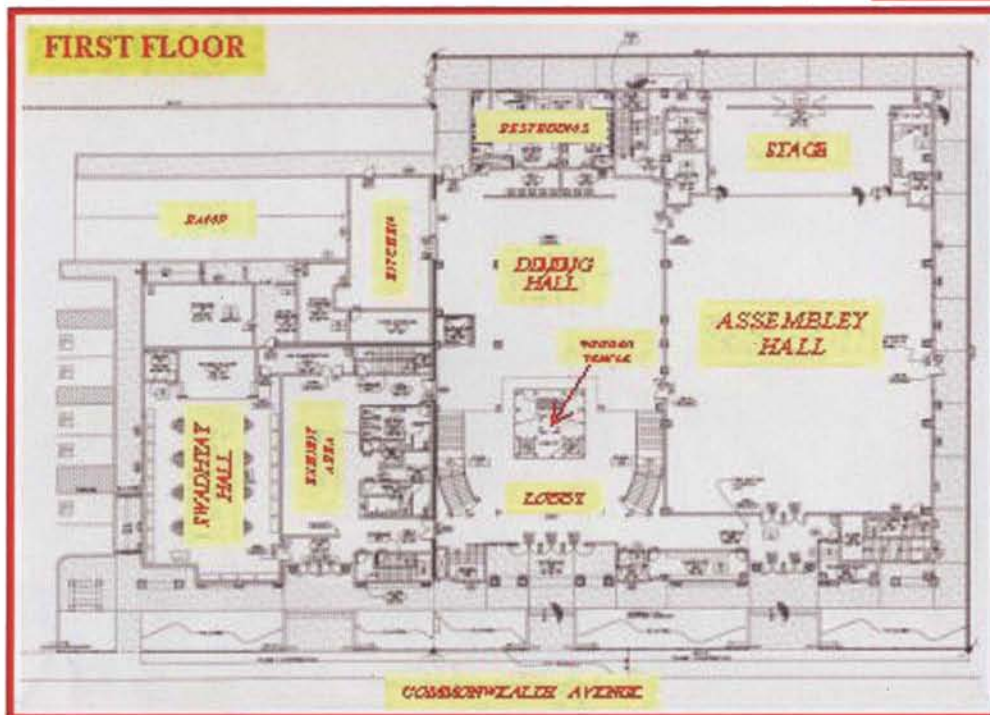
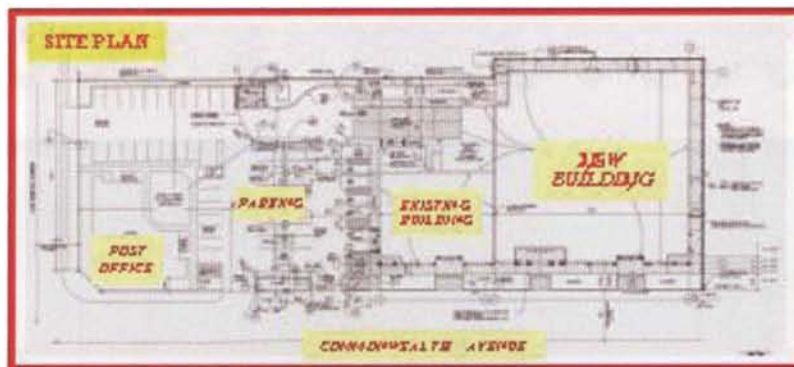


An eye surgery in progress  
by Dr. Ashish Mehta





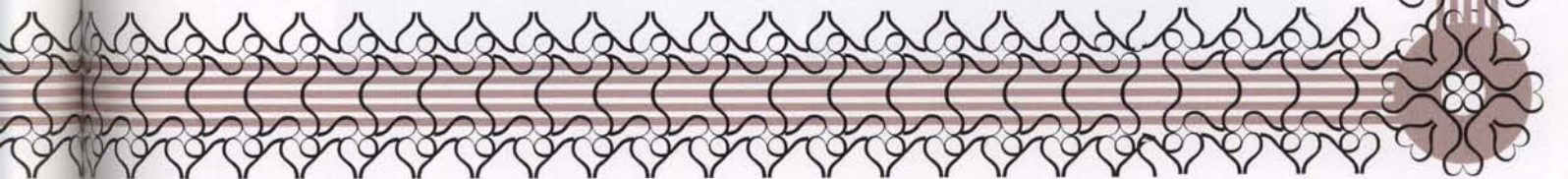
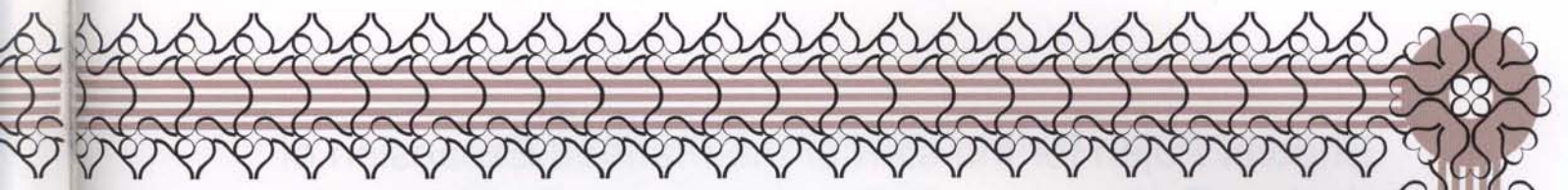














# Bhoomi Pujan for the start of the Planned Expansion of Jain Center of Southern California



Ladies and Young Girls Carrying Kumbh Going Towards Bhoomi Pujan



Cleansing the Path to the Bhoomi Pujan



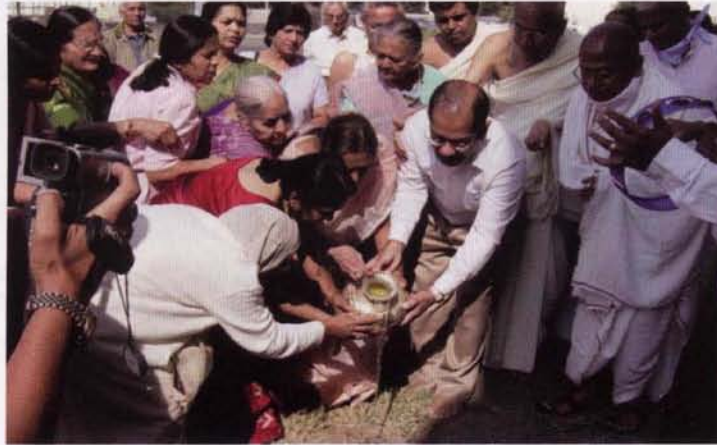
Bhoomi Pujan in Progress



Members Participating and Witnessing Pujan Activities



## Pujan Activities on the Day of Start of Construction



## JCYC Children, Teachers and Adult Volunteers at Winter Camp





# Health Fair at JCSC in April 2002



Medical Examination in Progress



Member Ladies in Kitchen with Buena Park Mayor (center back)



Physicians and Volunteers taking a much needed break

---

Ladies Listening During a Musical Program



*Our Best Wishes for Continued Success*  
*to*  
*Jain Center of Southern California*  
*from*  
*Jayesh & Parul Shah*  
*Puja and Khushboo*  
*Champion Realty*  
*909-597-5538*

**To accomplish great things, we must not only act,  
but also dream; not only plan, but also believe."**

*Best Wishes to*  
*Jain Center of Southern California*

**From:**  
**Bhadresh, Seema, Shirali & Sahil**

**Bhadresh J Shah**  
**Senior Financial Planner**  
**Merrill Lynch, Pierce, Fenner & Smith Inc.**

**225 S. Lake Avenue**  
**Pasadena, CA 91101**  
**800-882-4702**  
**626-356-2005**  
**Bj\_Shah@ml.com**

*Best Wishes for Grand Success*

*to*

*Jain Center of Southern*

*California*

*from*



*Dr. Jaldeep & Nita Daulat*

**Heartiest Congratulations  
to**

**Jain Center of  
Southern California**

**from**

**Sheth Family, Atlanta, Georgia**

**Madhu & Jagdish  
Reshma & Hitesh (Shah)  
Anuradha & Rajen  
And  
Raina & Maya**



# Jain Senior Association

Kantibhai Shah

Chhotubhai (not his real name) was excited, as he was getting ready to go to the Jain center. Today's program included a lecture by Dr Bharil, which, he was keenly waiting for, followed by a rendition of stavans and then lunch. And of course, who can resist stories of old times or a good laugh with friends? He had been a passionate 'regular' at the Jain center since the Senior Association was established in September 1996.

The Senior Association was formed under the umbrella of the Jain center with the main intent to conduct social, cultural and religious activities. These activities, besides providing entertainment to the seniors, would also provide an opportunity to develop friendly relations with the other members.

Chhotubhai, like many of his friends, came to the US from Gujarat, India when he was in his 50's. Being a homoeopathy doctor back in India, he loves to share his knowledge of yoga and medicine with his friends and with the community. In exchange he would love to know more about the US healthcare laws and how they affect him and his family. The Senior Association tries to obtain useful information on common issues as desired by its members like Chhotubhai. These include Government benefits, like social security, medical, transportation and other benefits provided to Senior Citizens.

Of course, as they say "All work and no play makes Jack a dull boy". Since its inception, the Senior Association has arranged many entertainment functions and events. These include musical programs, singing competitions, pooja, bhakti bhavna, rangoli, fancy dress program, chaitra paripati (visiting ghar derasar after Paryusan) and tours to different temples, museums and other places of interest. They have also arranged bus trips to San Diego, Palm Springs, Santa Barbara and San Francisco, to name a few.

It is very encouraging to note that all seniors have thoroughly enjoyed these programs and have eagerly participated in the various activities organized by the Association. It is their enthusiastic participation that drives the organizers to move forward. The younger generation is also delighted to see their parents enjoying these programs. The Senior Association has thus been able to address the needs of its members.

In future, the Association is trying to arrange transportation from their home to the Jain Center, so that its members can participate in programs arranged by the Jain Center. After the expansion of our Center, the Senior Association would like its members to make more visits to the Center and utilize the new facilities more extensively.

# LAW OFFICES OF PARESH A. SHAH

## CORPORATE IMMIGRATION SPECIALISTS

*Expertise in H-1B, L-1 Investor Visa and labor Certification Applications  
We also specialize in Relative Petitions, Adjustment of Status, Citizenship,  
Temporary Visas for Artists & Cultural Groups and Canadian Immigration.  
Our Services include every aspect of employment based immigration  
and temporary work visas for the U.S.*

**WE ARE A CREATIVE, PROACTIVE AND  
RESULT ORIENTED LEGAL TEAM.**

Please visit our Webpage @ [www.shahlaw.com](http://www.shahlaw.com)

Call Toll Free  
Nationwide

**1-888-SHAH-LAW**

Affordable Rates,  
Free Consultation

FLUENT IN HINDI . URDU . GUJARATI . PUNJABI . CHINESE . SPANISH  
E-mail: [Paresh@shahlaw.com](mailto:Paresh@shahlaw.com)

100 S. Anaheim Blvd., Ste. 330; Anaheim, CA 92805;  
Tel: 714-635-3200; Fax: 714-635-1139

*Our Best Wishes for Continued Success  
to  
Jain Center of Southern California  
from*

*Chandrakant & Bharti Shah  
Pinal and Parin  
118 S. Pinetree Court  
Walnut, CA 91789  
909-594-0127*

*Ashvin & Divya Sheth  
Ami and Amit  
15852 Tanbery Drive  
Chino Hills, CA 91709  
909-606-8417*

*Best Wishes for Grand Success*  
*to*  
*Jain Center of Southern California*  
*from*  
*Harshad and Raksha Shah*

**e q u a n i m o u s**

every dance is a journey

Are you looking for a dance troupe to make your event livelier?  
**Your Search Is Over!**

Samta Jain is an accomplished performer, choreographer, and dancer. She has performed and worked for various groups at various events like "The Guru" premiere, Medical Doctors Gala, private events, and currently at UCI.

The Equanimous dance troupe will perform for your event will mix your music suitable for your party mood choreograph dances with creativity and stunning originality will also train your dancers for various occasions

**Please contact Samta Jain for prices**  
**714.585.8398**  
**Nachadi2002@yahoo.com**

## સુવર્ણ તક આપણે આંગણે

જીતેન વસા

આ માનવીનું જીવન એક સુવર્ણ તક છે. સોનેરી અવસર છે. એનો ઉપયોગ કરી લઈએ. મીઠ, શી ખબર, આ પળી કરી આપણને સાંપડે કે નહીં? તકદીરના ભરોસે બેસી રહેનારા તકનો લાભ ઉઠાવી નથી શકતા. અનંત, અસીમ જન્મોમાં જે મોકી આપણે નથી મેળવી શક્યા, એ આજે અનાયાસે આપણી સમક્ષ આવ્યો છે તો એને માણી લઈએ.

ગયેલો સમય અને વહેતા નીર કદી પાછા વળતા નથી. વિચારોની વળગણો ખંખેરીને કંઈક સુંદર પગલુ ઉપાડી, દોસ્ત. પ્લાનીંગ કે આયોજાન અહીં કિક્કા પડે છે. અહીં તો એજ જીતે છે જે સમયની સરગમ પર બેઢિકીનું ગીત છોડી શકે. અને કિસ્મતના ઘડવૈયાને કહી શકે -

“મેં કદી માંગી નથી જગમાં યુગોની જીંદગી

કોઈ યુગને સાંપડે એક એવી ક્ષણ મળે.”

ગુલાબ અને ધંતુરૌ - બન્ને ઉગે જમીનમાંથી - છતાંય બન્નેની જીવવાની રીતમાં તફાવત હોય છે. બન્નેને એક જ માટી, એક જ પાણી મળે છે, એક જ જાતનું ફવામાન મળે છે - છતાં પણ ગુલાબ શતદલ પાંખડીએ ખીલી ઉઠશે અને ધંતુરૌ અલબત્ત ઉઘડશે - પણ એનો ઉઘાડ કોઈના ઉરને ઉલ્લાસ નહીં બક્ષે. ગુલાબની દરેક પાંખડી કોમળતા વેરે છે .. સુગંધ ફીરે છે .. ગુલાબ જ્યાં હોય છે ત્યાં ખુશબોની દુનિયા રચાઈ જાય છે. માનવના દિલ ને દિમાગ તરબતર બની જાય છે. જ્યારે ધંતુરાની સામે જોવા કોઈનીય પાંખણ તૈયાર નહીં થાય.

આજે આપણા આંગણે - જૈન સેંટરના આંગણે - વર્ષોથી જેની મનોકામના હતી, એક સ્વાપ્ન હતું, એક અરમાન હતું, એક તમન્ના હતી, તેને સાકાર કરવાનો સમય આવી ગયો છે. તેની અનુભૂતી પણ થઈ જ રહી છે. અનેક કાર્યકરો પોતાના તન, મન, ધનથી તેની સેવા કરી રહ્યા છે. આપણા જૈન સમાજની એક એક વ્યક્તિની જવાબદારી બની રહે છે કે આ સેંટર આંગણાની તુલસી બની જાય, તેની મદદ કરવા તલપાપડ થઈ જાય. આ આપણુ જ ઘર છે. આપણુ જ દેરાસર છે. આપણી જ ઇમારત છે. આ સેંટરથી થતા લાભની આપ સૌને જાણકારી તો છે જ.

માટે ગુલાબ જેવા બનો. દોસ્તો, ગુલાબનું પોતાનું આગવું વ્યક્તિત્વ છે - અવનવું અસ્તિત્વ છે. ગુલાબની પાસે જનાર મહેંક માણે છે. તમારી પાસે આવનાર તમારા ગુણોની સુગંધથી સભર બને એવું વ્યક્તિત્વ વિકસાવો. ગુલાબની જેમ ખુલ્લે હાથે તન, મન, ધનથી યથાશક્તિ આ ભવ્ય ઇમારતને ચણાવાનું કાર્ય તમારા હાથમાં ઉપાડી લો. ગુલાબની સુગંધની જેમ આ ભવ્ય સેંટરની મહેંક તમારા જીવનમાં પ્રસરી જશે તેમાં જરાય શંકા નથી.

“ખોટી તુ રકઝક ના કર, જીંદગી પર શક ના કર  
એ ફરી નહીં આવે, તું આ સુંદર તક જતી ના કર.”

જીતેન વસાના જય જીનેન્દ.

**GOING TO TEMPLES IS GOOD**

**PRAYING TO GOD IS GREAT**

**HELPING SUFFERING AND NEEDY IS THE BEST**

**PLEASE DO NOT FORGET TEMPLES IN  
SACRAMENTO AND WASHINGTON D.C.!!**

**NINNA AND BHARAT PATEL**

**With Best Compliments To**

**The Jain Center of Southern California**

**From**

**Kanu Parikh - Tax Consultant**

**Enrolled Agent**

**Licensed to Practice before Internal Revenue Service**  
**Serving community since 1981**

**SMALL BUSINESS SPECIALIST**

**Individual – Partnership – Corporation**

**Financial Statement – Tax Return – Tax Audits**

**Accounting & Payroll Service**

**Free 30 Minutes office consultation (mention this ad)**

**19726 E. Colima Rd.,**

**Rowland Heights, CA 91748**

**(909) 595-8615**



*Heartiest Congratulations*  
*to*  
*Jain Center of Southern California*  
*from*

Dr. Chunilal Shah  
Dr. Ajit Shah  
12625 La Mirada Blvd., Suite 207  
La Mirada, CA 90638  
562-947-1619

*Best Wishes*  
*to*  
*Jain Center of Southern California*  
*from*

Dr. Rajendra Tiwari  
811-244-5117

Aim for success, not perfection. Never give up your right to be wrong, because then you will lose the ability to learn new things and move forward with your life.

With Best Compliments to  
**Jain Center Of Southern California**

From: Ronik, Arti, Tejal  
Dr Alka & Ramesh Kothari

**Dr. Ramesh Kothari**

Family Dentistry & Orthodontia ( Braces)  
12144 East Carson St. #E  
Hawaiian Gardens, CA 90716  
Phone : 562-982-1380

**WITH BEST COMPLIMENTS TO  
JAIN CENTER OF SOUTHERN CALIFORNIA**

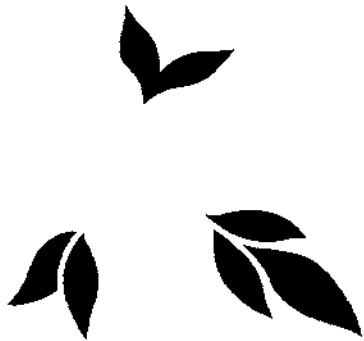
from

**Maulik, Taru & Dr. Gautam Shah**

**CLINIC FOR CHEST DISEASES  
10192 W. COGGINS DRIVE  
SUN CITY, ARIZONA 85351  
Tel : (623) 974-2434  
Fax : (623) 974-4925**

*With Best Compliments  
to  
Jain Center of  
Southern California  
from*

Kishor & Rekha Shah



## Mahavir Mandal at Jain Center

Savitaben Mehta

The Mahavir Mandal at Jain Center of Southern California was started in 1980 by a group of senior ladies at the Center as their continuing activities of "Mandal" they have been accustomed to in India. Initially it was named or called Mahila mandal. However, soon some of the senior men also joined the Mandal and the name was changed to Mahavir Mandal.

Vasantben Shah took the lead and with about 15 to 20 members we started promoting Mahavir Mandal activities. The primary activities included performing Pujas at the Center as well as at the homes of our members. As JCSC started to grow, Mandal's activities also increased from Puja ceremony to include Ekasana, Ayambil, etc. As our current Jain Bhavan was built, the Center activities and the activities of the Mahavir Mandal increased. Every month 4 to 6 Pujas were conducted at the temple. Also Mandal expanded to perform many more Puja ceremonies at individual homes.

Mahavir Mandal members not only recite these Pujas, they also practice the ceremonies and help the new members in practicing the rituals. These practices help the members achieve rhythm and coordination in singing during the Puja.

This religious activities help keep the younger generation understand Jain Philosophy and rituals during Puja ceremonies. Young children are encouraged to participate in different rituals during puja so they will learn to perform the puja. This promotes the Jain practices to the continuing generations.

Presently Mahavir Mandal has 58 members. With the growth in membership and activities, a formal committee was formed in 2001 to help coordinate the activities. The current officers are:

President: Vasantben Shah,  
Vice Pres: Savitaben Mehta  
Secretary: Rasilaben Shah  
Treasurer: Gitaben Khona

Members at Large:  
Padmaben Shah  
Divyaben Gangar  
Naukaben Shah

With Mahavir Bhagwan's blessings our Jain Center Expansion Project will be done with great success.

Jai Jinendra,  
Savitaben Mehta

*Heartiest Congratulations*  
*to*  
*Jain Center of Southern California*  
*from*

Harshad & Niharika Kothari

Shohil & Sneha

With Best Wishes for The New Jain Bhavan

From

Dr C. V. Mehta, Danu Mehta, Amal, Mitul  
& Mehta Family



Dr C. V. Mehta, M.D., F.A.C.R.  
Diplomate American Board of Rheumatology  
Internal Medicine & Geriatric Medicine

26960 Cherry Hills #D  
Sun City, CA 92586  
909-672-1866

949 Calhoun Pl Ste F  
Hemet, CA 92543  
909-652-5000

36243 Inland Valley Dr. #210  
Wildomar, CA 92595  
909-677-1132

*Best Wishes for Grand Success*

*to*

*Jain Center of Southern  
California*

*from*

*B J Medical College*

*Ahmedabad, India*

*Alumni Association in USA*

*Jasvant Modi, MD*





Best Compliments to Jain Center of Southern California



*Vegetarian Gourmet & Catering Specialists*  
*Gujarati, South Indian & Punjabi*  
**For Catering Call 1-866-JayBharat**



Love is Golden

JOIN YOUR CIRCLE OF FRIENDS TODAY AT HIGHGLOW JEWELERS



18644 Pioneer Boulevard • Suite 100  
Artesia, CA 90701 • Telephone 562-441-1111

# **Congratulations**

**To all Volunteers, Donors & Participants for your active involvement in this noble Jain Temple project & for continuing to grow this important spiritual culture in USA.**

**Your efforts make this land a better place for all of us.**

***Thank You!***

**Pinakin Pathak  
Filtration Technology Group  
Santa Fe Springs, CA 90670**

FTG endeavors to protect people, machines and environment. We design, manufacture and distribute air and liquid filtration equipment for a wide range of markets and applications - from commercial and industrial products and from diesel powered vehicles to specialized custom engineered products

**FTG Distributes Quality To Quality Distributors throughout the World**

**Dr. Ami Patel & Dr. Carleton Fong**

**Optometrists**

**2771 S. Diamond Bar Blvd.,**

**Diamond Bar, CA**

**909-598-4393**

## **Comprehensive Vision Exams**

Including Glaucoma evaluations

Cataract Evaluations

Infant and Toddler Examinations

## **Laser Vision Co-management**

## **Contact Lenses**

Bifocal lenses

Lenses for astigmatism

## **Vision Therapy**

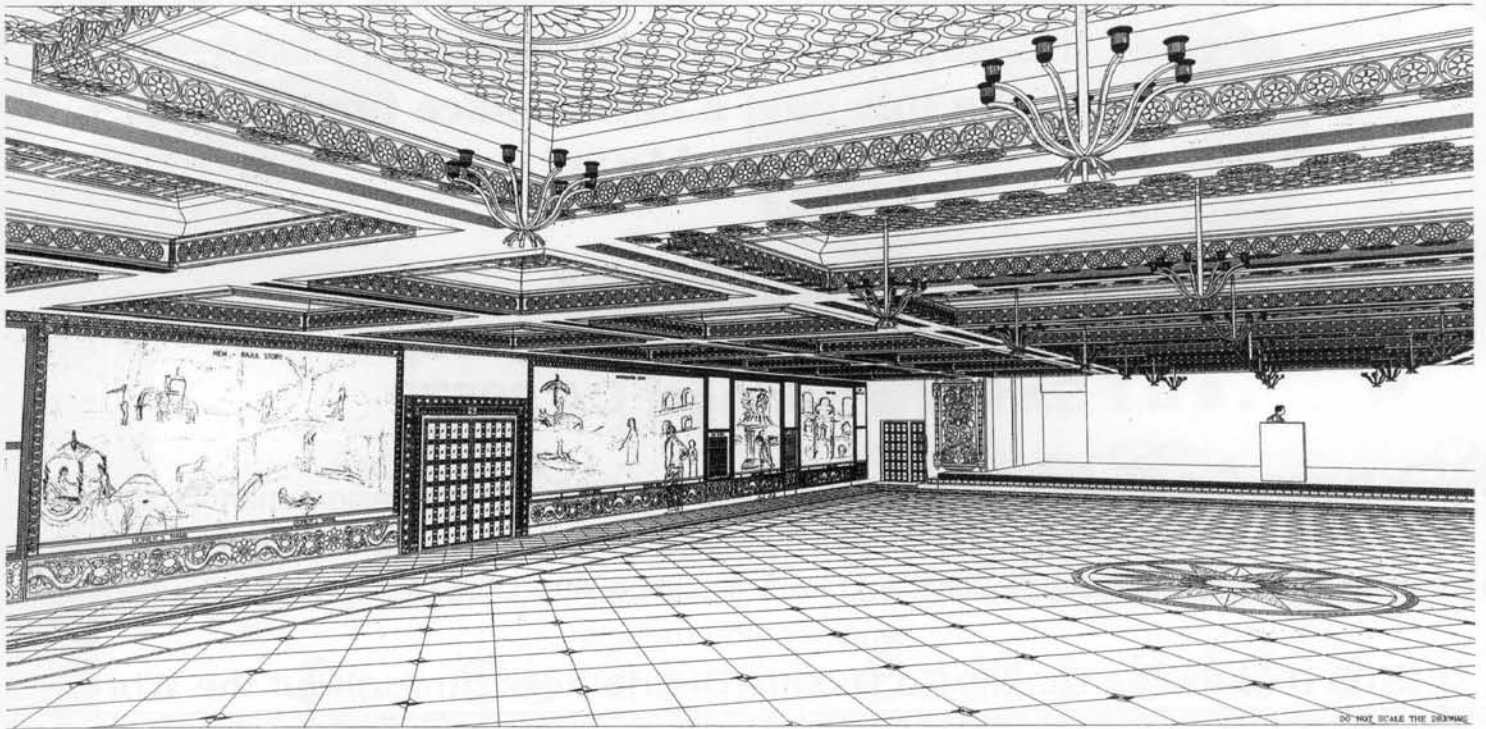
Developmental evaluations

Visual perceptual evaluations

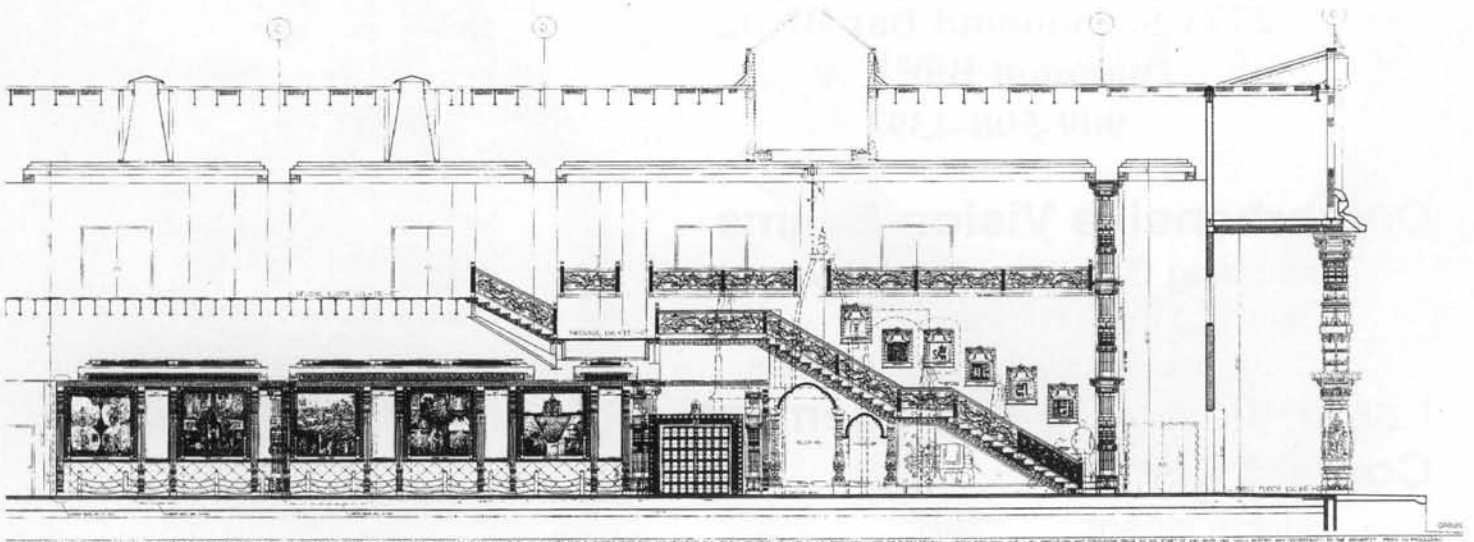


**We feature Marchon Eyewear**

# New Auditorium with Capacity to Hold 1000 persons

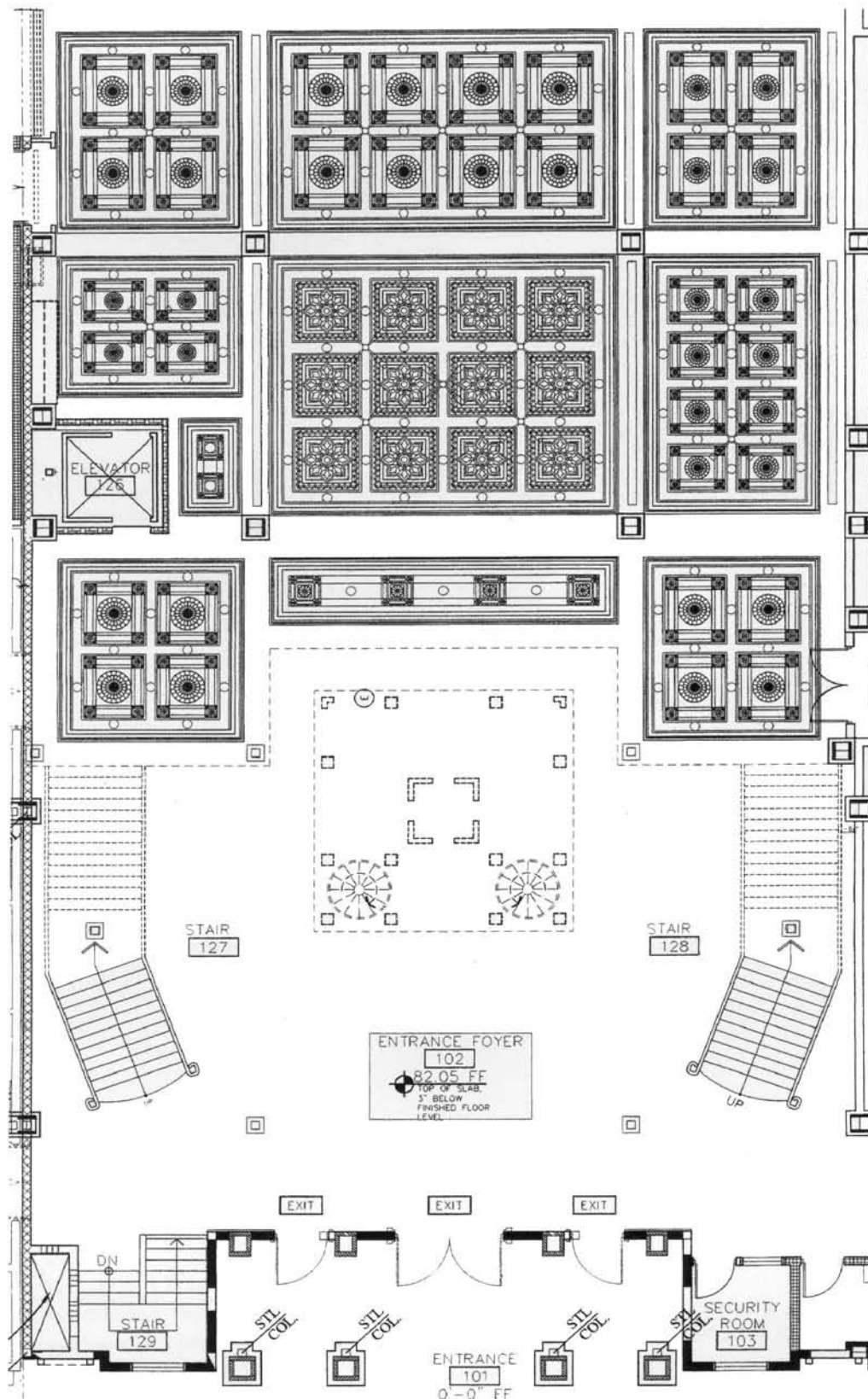


## Murals Along Staircase



Page sponsored by  
Chander and Rekha Mittal  
Gordhan and Saroj Patel

# Plan View of Main Entrance and Exhibit Areas



Page sponsored by Dr Ashok & Avi Kar





## National Real Estate Investment Group

Robert M. Attyah  
President

5160 Birch Street, Suite 210 Newport Beach, California 92660

Phone 949.475.0027  
Toll Free 800.500.4755  
Fax 949.474.2043



**CAPITAL COMMERCIAL**

COMMERCIAL REAL ESTATE SERVICES, WORLDWIDE.

4650 Von Karman Avenue  
Newport Beach, California 92660  
**949/854-6600**

DIRECT 949/417-3175

MOBILE 949/584-6189

FAX 949/854-7378

EMAIL [lcoker@naicapital.com](mailto:lcoker@naicapital.com)

URL [www.NAICapital.com](http://www.NAICapital.com)

**Lynn F. Coker**  
Associate



**PROFESSIONAL,  
FULL SERVICE  
REAL ESTATE INVESTMENTS**

**RESIDENTIAL**

- Apartments
- Condominiums
- Single Family Homes

**COMMERCIAL**

- Office Buildings
- Shopping Centers
- Industrial Buildings

---

**CALL REAL**

• Rao Yalamanchili • Kumar Koneru • Ravi Koneru

224 S. Santa Anita Ave. Arcadia Ca 91006 Ph: (626) 254 9800 Fax: (626) 254 9700

*With Best Compliments  
and  
Best Wishes*

*From*

***Mahendra Solanki & Family***

***Residential & Commercial Real Estate***

***Free Notary Services***

**(949) 861-0507 cell • (949) 470-3600 office  
(949) 470-3606 fax**



e-mail:solankim@aol.com



**Ask About**

**Whole Life Insurance, Variable Universal Life Insurance\*, Level Term Life, Disability  
Income Insurance, Variable Annuities\* & many more...\*\***



**Call**

**RASIK SHAH**

**CA Lic# 0738799**

**Financial Services Rep**

**Service From 1988**

**Off: (888)704-3495 ext 38**

**Res: (714) 670- 7854**

**Fax: (949) 851-6323**

**Email: rshah@metlife.com**

**MetLife® Financial Services**

**2601 Main St. #400**

**Irvine, CA 92614**

**MetLife®**

**have you met life today?SM**

**\*Variable Life Insurance and Variable Annuities offered by Metropolitan Life  
Insurance Company, New York, NY 10010**

**\*\* Some products offered by unaffiliated insurers through the MetLife General Insurance  
Agency, Inc., New York, NY 10010**

**Metropolitan Life Insurance Company, One Madison Avenue., New York, NY 10010**

**E0301FQY7 (exp 0505) (CA) MLIC-LD**

*Best Wishes*

*to*

*Jain Center of Southern California*

*from*

**Dipak & Harshila Doshi**

**Video Galaxy**



**Heartiest Congratulations  
to  
Jain Center of  
Southern California  
from  
Bhupesh & Kumud Parikh**



**With Best Compliments To  
The Jain Center of Southern California**

**From  
Stat Home Health**

**2105 Beverly Blvd.,**

**Suite 221-223**

**Los Angeles, CA 90057**

**Tel: (213) 483-2355**

**Fax: (213) 483-1169**

**TTY/TDD (213) 204-0745**

**(800) 696-STAT(7828)**

**Mohinder Sohal, MD, FCCP, FACC**

**Diplomate - American Boards of Internal**

**Medicine & Cardiovascular Diseases**

**2105 Beverly Blvd.,**

**Suite 227**

**Los Angeles, CA 90057**

**Tel: (213) 484-8186**



## HAMILTON BREWART INSURANCE

### The Choice – “Insurance Professionals”

#### INSURANCE PROGRAMS

#### Coverages

- ✦ Workers' Compensations
- ✦ Property
- ✦ General Liability
- ✦ Liquor Liability
- ✦ Auto Liability
- ✦ Employment Practices
- ✦ Umbrella Liability
- ✦ Professional Liability
- ✦ Boiler & Machinery
- ✦ Crime
- ✦ Inland/Ocean Marine
- ✦ Bonding

- ✦ Life Insurance
  - ◆ Business
  - ◆ Personal
- ✦ Health Insurance
  - ◆ Business (Group)
  - ◆ Personal

#### Business Categories

- ✦ Apartment Buildings
- ✦ Associations
- ✦ Contractors
- ✦ Industrial Buildings
- ✦ Hotels/Motels
- ✦ Manufacturers
- ✦ Office Complexes
- ✦ Restaurants
- ✦ Shopping Centers
- ✦ Wholesalers/Retailers

(909) 981-5210 FAX (909) 985-3448  
 TOLL FREE (888) 342-2200  
 1282 West Arrow Highway Upland, CA  
 CA DOI LICENCE # OD69219





*With Best Compliments to Jain Center*



**ENVIRONMENTAL, INC.**

**DEMOLITION • ASBESTOS AND LEAD ABATEMENT  
HAZARDOUS / SOIL REMEDIATION • MOLD REMEDIATION**

**CST ENVIRONMENTAL INC.**

**404 North Berry Street • Brea, CA 92821 • (714) 672-3500 • (714) 672-3501 fax  
License #549566**

**LOS ANGELES • DALLAS • HOUSTON • SAN FRANCISCO • LAS VEGAS • DENVER • TAMPA BAY**